

# FOR SALE

## RIO RANCHO VACANT COMMERCIAL LAND

NM 528 Signalized Intersection!  
Amazing Sandia Mountain Views!



NM 528 at Willow Creek Rio Rancho, NM 87144

- Zoning: Commercial / SU-C1
- Easy Access to Enchanted Hills and Rio Rancho City Center
- Across from Sandoval County Courthouse
- Lots of Traffic ~ 26,000 VPD
- 2.49 Acres

Priced for TODAY'S MARKET!!

**\$4.00 PSF!**

Greg Campbell  
505-792-3713  
[www.wwrealty.com](http://www.wwrealty.com)



3613 NMSR 528 NW, Suite H Albuquerque, NM 87114 Office 505-792-3713 Fax 505-792-3735 [www.wwrealty.com](http://www.wwrealty.com)

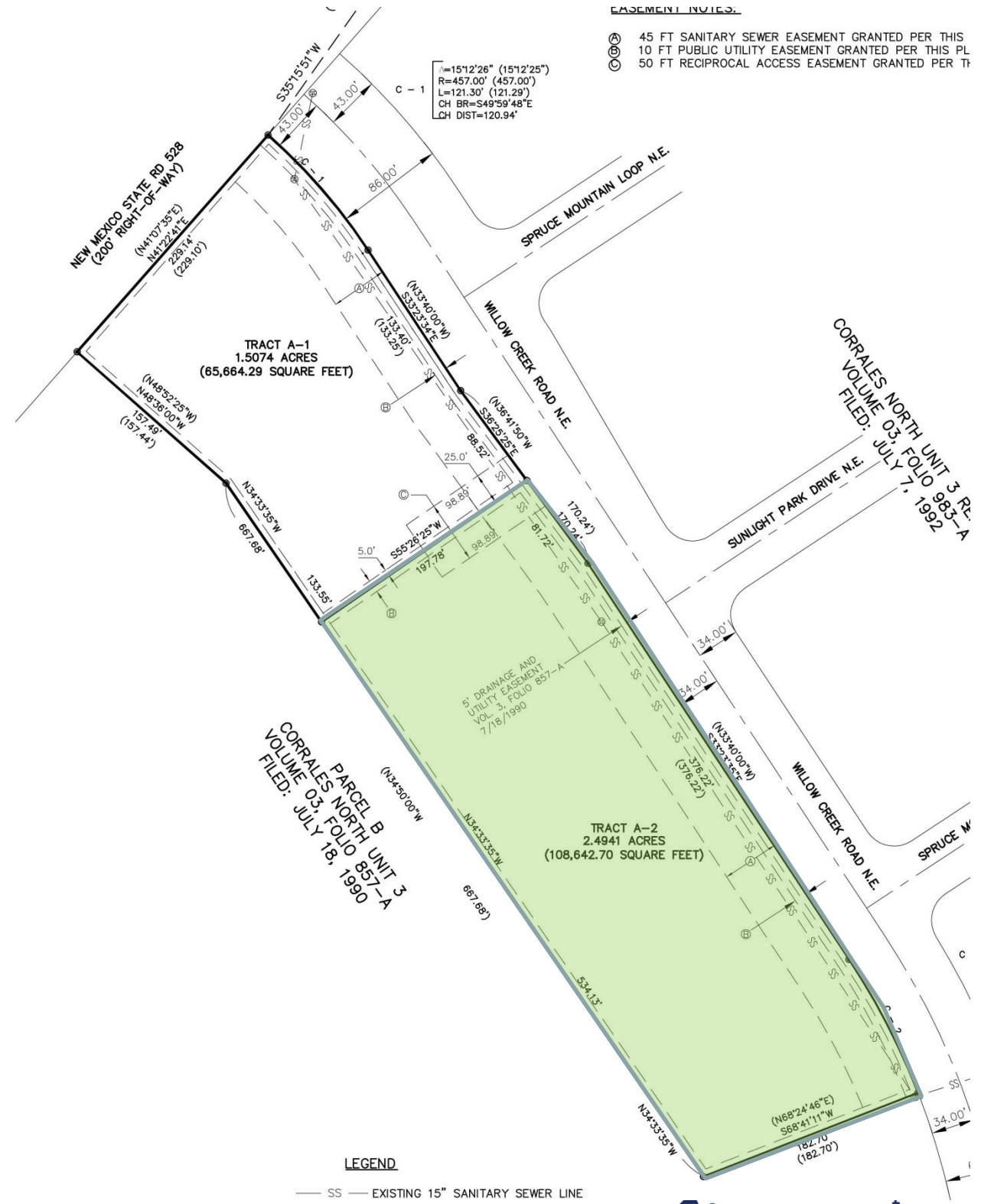
The information contained herein has been obtained from sources we deem reliable. We cannot, however, assume responsibility for its accuracy.

WEST WOOD REALTY

# FOR SALE

## RIO RANCHO VACANT COMMERCIAL LAND

**WEST WOOD REALTY**



3613 NMSR 528 NW, Suite H Albuquerque, NM 87114 Office 505-792-3713 Fax 505-792-3735 www.wwrealty.com

The information contained herein has been obtained from sources we deem reliable. We cannot, however, assume responsibility for its accuracy.

# FOR SALE

## RIO RANCHO VACANT COMMERCIAL LAND

**WEST WOOD REALTY**



ENCHANTED HILLS



21,080 VPD

2.49 Acres  
\$4.00 PSF



**WEST WOOD REALTY**

3613 NMSR 528 NW, Suite H Albuquerque, NM 87114 Office 505-792-3713 Fax 505-792-3735 www.wwrealty.com

The information contained herein has been obtained from sources we deem reliable. We cannot, however, assume responsibility for its accuracy.